

55 Malpas Close
Bransholme
Hull
HU7 4HH



55 Malpas Close

£110,000

Discover the perfect family sanctuary in this inviting 3-bedroom home, designed to provide comfort, style, and ample space for every member of your family. Situated in a desirable location, this residence combines modern living with a cozy charm that makes it a warm and welcoming haven.

The heart of the home is the spacious dining kitchen, ideal for meal preparation and family gatherings. The fully fitted kitchen is a hub for culinary delights. The dining area is perfect for sharing meals and creating cherished memories with your loved ones.

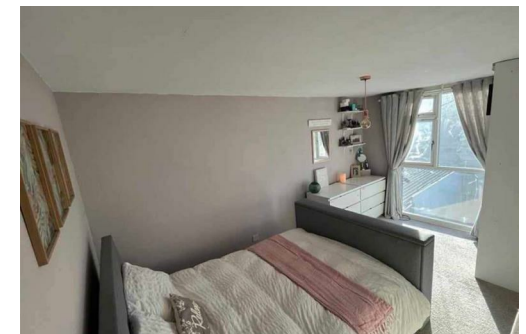
The inviting lounge is enhanced by the ambiance of a log fire, providing warmth and character to the space. Whether you're curling up with a good book or enjoying conversations with family and friends, this room is a cozy retreat.

One of the standout features of this home is the conservatory, a versatile space that can be used as a sunroom, playroom, or additional dining area. With an abundance of natural light, it provides a tranquil escape to enjoy the changing seasons and the views of the well-kept garden.

The property also includes a convenient downstairs w/c, adding a touch of practicality to your daily routine.

The sleeping quarters consist of two double bedrooms and one single bedroom. The master bedroom is well-appointed with a fitted wardrobe, ensuring that you have plenty of storage space for your belongings. The additional bedrooms offer a peaceful space for rest and relaxation, making it an ideal family home.

Step outside, and you'll find a garden that's easy to maintain, thanks to an Astroturf lawn and a charming decking area and the addition of a boarded garage. It's the perfect spot for outdoor activities, relaxation, and alfresco dining. The property was thoughtfully extended in 2022, enhancing the living space and providing modern amenities that today's families desire.



Kitchen

This truly is the heart of the home with fitted wall and base units and integral oven and hob the kitchen has ample space for a dining table and chairs. window to the front of the property and sliding doors to the conservatory at the rear.

Lounge

This rooms has many added benefits not only been a good size it has patio doors leading to the rear garden and a log burning stove to keep all warm during the winter months.

Entrance

The front of the property has a entrance way which has been modified to remove the wall to the kitchen giving it a more open plan feel. The downstairs W/C is located just off the entrance way and there is a really useful storage cupboard.

Conservatory

This multi use room could be a sun room, play room, games room office and much more...

With windows over looking the garden and doorway this space is easy to adapt to suit your needs.

W/C

Ground floor W/C is a compact space with window to the front garden

Bathroom

This family bathroom has all that is needed to serve the whole family with white suite and shower over the bath

Master Bedroom

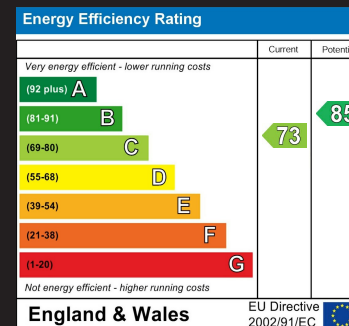
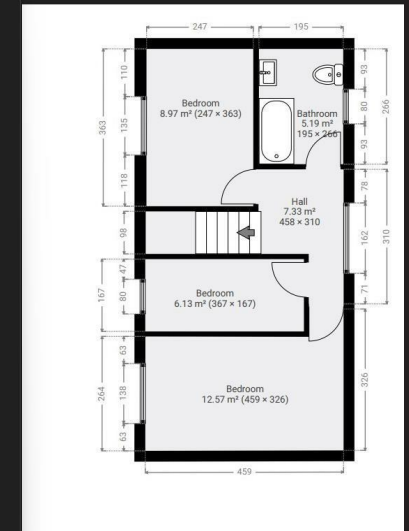
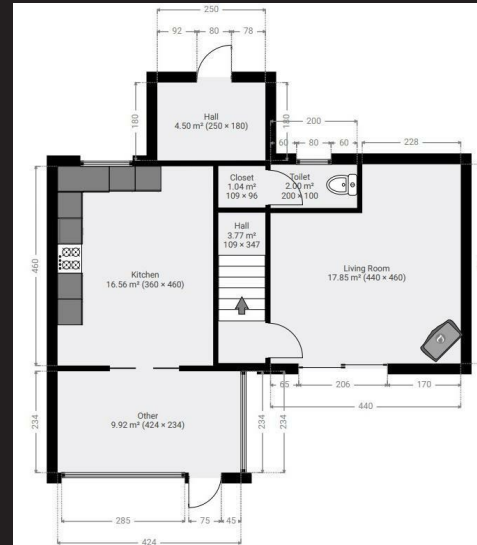
Spacious double bedroom with window overlooking the rear garden. This room boasts fitted wardrobes.

Bedroom Two

This double bedroom over looks the rear garden with storage cupboard housing the central heating boiler above the stairs.

Bedroom Three

This small and compact room has the option to purchase the unique Murphy Bed perfect to allow more room for any occupant.



Agents Note: Whilst every care has been taken to prepare these particulars, they are for guidance purposes only. All measurements are approximate and are for general guidance purposes only and whilst every care has been taken to ensure their accuracy, they should not be relied upon and potential buyers/tenants are advised to recheck the measurements



Head Office Lettings

The Community Enterprise Centre
Cottingham Road
Hull
HU5 2DH



Contact

01482 319200
info@pandapropertyltd.com
www.pandapropertyltd.com